

HOME IS EVERYBODY'S PRIDE SO MAKE SURE YOU USE HOME PRIDE



HOME PRIDE

Complete Tile Fixing Solution

Na Tile
Toote.
Na Dil.❤️



Tile Adhesive | Epoxy Grout | Wall Plaster | Tile Cleaner



CONTENT

Home Pride Polymer Modified Adhesive

Home Pride 999 Tile Adhesive	1
Home Pride 1001 Tile Adhesive	1
Home Pride 1002 Tile Adhesive	2
Home Pride 1011 Glass Mosaic Adhesive / Multipurpose	2
Home Pride 1021 Multipurpose Adhesive	3
Home Pride 1031 Super Platinum / Stone Adhesive	3
Home Pride AAC Block Jointing Mortar	4

Home Pride Joint Filler

Home Pride Epoxy Joint Filler	5
Home Pride Epoxy Glitter	5

Home Pride Polymer Modified Adhesive

Home Pride Polycryl 1051	6
Home Pride All Rounder PU Adhesive	7

Home Pride Grout

Home Pride Cementitious Grout (Unsanded)	8
Home Pride Cementitious Grout (Sanded)	8
Home Pride Water Repellent Grout	9
Home Pride Polymer Modified Grout	9

Home Pride Wall Plaster

Home Pride Wall Putty	10
Home Pride Course Wall Putty	10
Home Pride Wall Plaster	11
Home Pride Thin Bed Plaster	11
Home Pride Gypsum Plaster Elite 30 Silver	12
Home Pride Gypsum Plaster Elite 90 Gold	12
Home Pride One Coat Plaster	12

Home Pride Polymer Modified Adhesive

Home Pride Tile Bonder	13
Home Pride Thick Bed Mortar	13

Home Pride Admixture

Home Pride 3333 Polymer	14
Home Pride 93 Crete Admixture	14
Home Pride Grout Admixture	15
Home Pride Shield Concrete Admixture	15

Home Pride Stone Care Product

Home Pride Sealer	16
Home Pride Densifier	17
Home Pride Epoxy Gel	18
Home Pride Crackfill	19
Home Pride Mastic	20
Home Pride Powder Polish	21

Home Pride Special Product

Home Pride Chrome Polish Guard	22
--------------------------------	----

Home Pride Cleaner / Remover / Spacer / Tools

Home Pride Cutfast Tile Cleaner	23
Home Pride Cutfast C.P. Cleaner	23
Home Pride Cutfast Epoxy Remover	24
Home Pride Spacer	24
Home Pride Trowels	24

Home Pride Epoxy Adhesive

Home Pride 369 Epoxy Adhesive	25
Home Pride 371 Epoxy Anchor Adhesive	25

Home Pride Water Proofing

Home Pride Two Component Water Proofing	26
Home Pride Hydro Block	26

HOME PRIDE

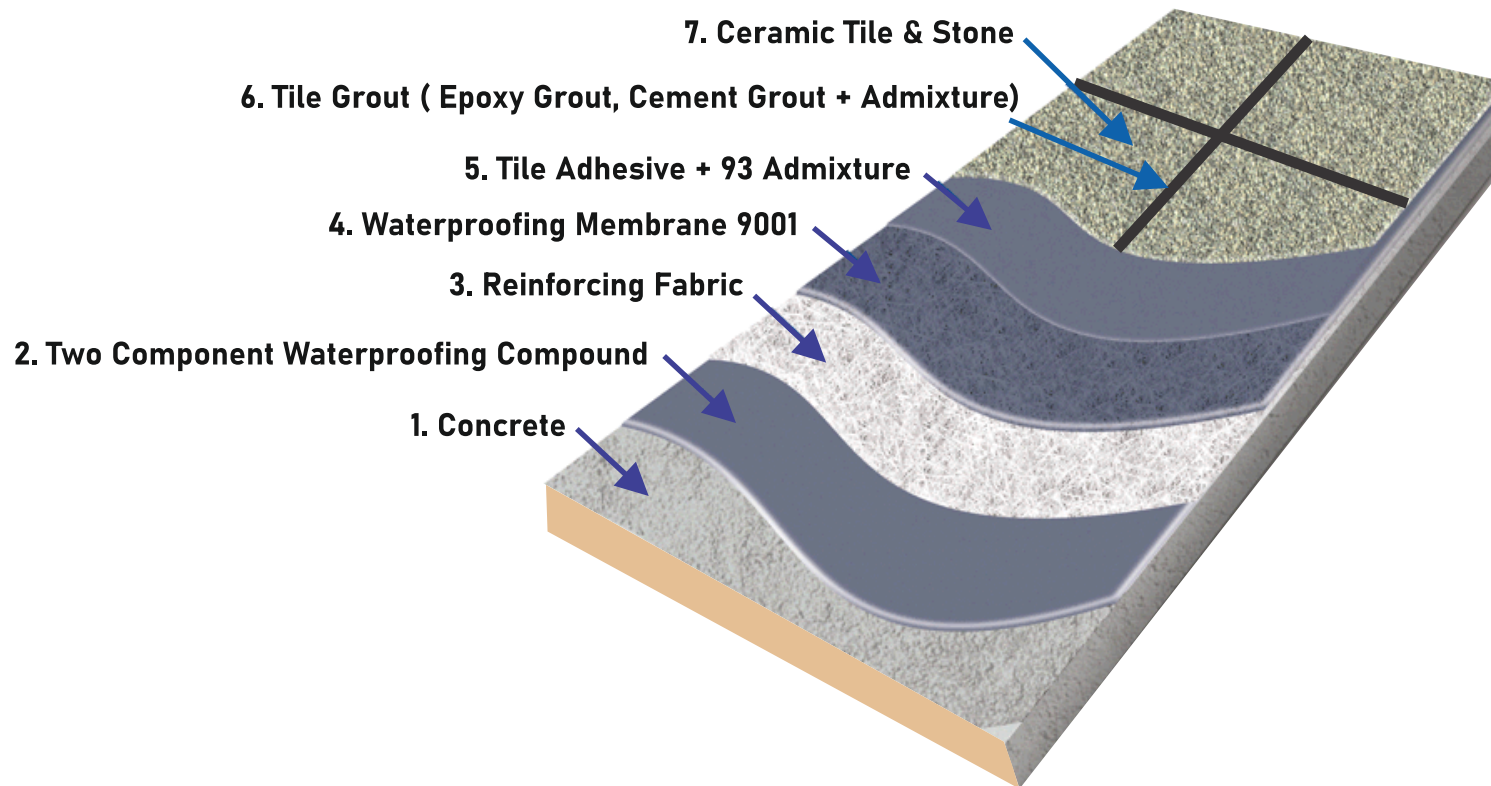


HOME PRIDE
Complete Tile Fixing Solution

HOME IS EVERYBODY'S PRIDE SO MAKE SURE YOU USE HOME PRIDE

INTRODUCTION

Home Pride is one of the leading manufacturer of TILE ADHESIVES, GROUTS, SEALER, WATERPROOFING, WALL PUTTY for interior & exterior and other building products to building solution. Quality assurance is an integral part of HOME PRIDE manufacturing philosophy. The quality attribute are consistently ensured through rigorous application of advance technologies. Our plants has ISO & ISI certifications. We are also vendor for big multinational and national companies. We have a good network of dealers & distributors. We also cater projects. We design our products keeping in mind to protect natural resources and making eco friendly products. We have a team of professionals who can guide contractors for application of our products. Our aim is to provide top quality products at competitive price to the customers. Our products are approved in CPWD, PWD & other Govt. Departments.



FLOOR INSTALLATION DETAIL

HOME IS EVERYBODY'S PRIDE SO MAKE SURE YOU USE HOME PRIDE





Home Pride 999 Tile Adhesive

Home Pride 999 is a wonderful mixture of cement, polymer, natural mineral and other aggregate to produce adhesive when mix with water. For installation of small and medium tiles on floor for interior only. It is a fantastic product in single packaging with unique features & advantages. It is easy to apply and can be carried out by an ordinary mason.

Advantages : Ideal for fixing ceramic tiles on floor. Exceed ISI type one requirement.

Applications : Designed for internal floor applications.

Suitable surfaces : Cement mortar bed, cement plaster & cement terrazzo.

Coverage : Approximately 55-60 sq. ft. per 20 Kg bag with a 1/4" X 1/4" (6mm X6mm) square notched trowel for a bed thickness of 3mm.

Colour : Grey & white.

Packaging : 20 Kg.

Certification : Approved 15477 : 2019 - Type 1, Meet ANSI A 118.1 - T, EN : 12004 & ISO : 13007 - C1T



Home Pride 1001 Tile Adhesive

Home Pride 1001 polymer modified adhesive is for installation of small to medium format ceramic & vitrified wall and floor tiles in interior areas & exterior floor. To improve performance and for exterior use fortify with home pride 93 crete admixture.

Advantages : Ideal for fixing ceramic, vitrified and wall tiles. Meets ANSI 118.1 requirement.

Applications : Designed for external floor and interior wall & floor applications.

Suitable surfaces : Cement plaster, brick masonry, ceramic tiles, stone (mix with 93 mortar admixture), concrete and cement mortar bed.

Coverage : Approximately 55-60 sq. ft. per 20 Kg bag with a 1/4" X 1/4" (6mm X 6mm) square notched trowel for a bed thickness of 3mm.

Packaging : 20 Kg.

Colour : Grey & white.

Certification : Approved 15477 : 2019 - Type 2, Meet ANSI A 118.1 - T, EN : 12004 & ISO : 13007 - C2T





Home Pride 1002 Tile Adhesive

Home Pride 1002 polymer modified adhesive is for installation of small to medium format ceramic, vitrified wall & floor tiles in exterior areas. To improve performance and for exterior use. Fortify with home pride 93 crete admixture.

Advantages : Ideal for fixing ceramic, vitrified and wall tiles. Meets ANSI 118.1 requirement.

Applications : Designed for external floor and wall applications.

Suitable surfaces : Cement plaster, brick masonry, ceramic tiles, stone (mix with 93 mortar admixture) concrete and cement mortar bed.

Coverage : Approximately 55-60 sq. ft. per 20 Kg bag with a 1/4" X 1/4" (6mm X 6mm) square notched trowel for a bed thickness of 3mm.

Packaging : 20 Kg.

Colour : Grey & white.

Certification : Approved 15477 : 2019 - Type 3, Meet ANSI A 118.4 - ET, EN : 12004 & ISO : 13007 - C2TES1



Home Pride 1011 Glass Mosaic Adhesive / Multipurpose

Home Pride polymer modified thin set adhesive is for interior & exterior installation of ceramic tiles, vitrified tiles, stone quarry, glass mosaic tiles, paver and bricks when mixed with water. It has a convenient open time, high adhesion and workability. It exceeds type 2 Indian standard, EN and ANSI standard.

Applications : Designed for exterior areas and under water application.

Advantages : Superior bond & single component.

Suitable surfaces : Concrete, concrete masonry, cement mortar bed, cement plaster, ceramic tiles and stones brick masonry.

Packaging : 20 Kg.

Colour : Grey & white.

Coverage : Approximately 55-60 sq. ft. per 20 Kg bag with a 1/4" X 1/4" (6mm X 6mm) square notched trowel for a bed thickness of 3mm.

Certification : Approved 15477 : 2019 - Type 3, Meet ANSI A 118.4 - ET, EN : 12004 & ISO : 13007 - C2TES1





Home Pride 1021 Multipurpose Adhesive

Home Pride 1021 is a premium floor & wall thin set adhesive to be mixed with water or latex for installation of medium & large format tile vitrified tiles, marble and stone on floors and walls when mixed with 93 crete admixture. To improve performance use with home pride 333 flexible admixture for use in plywood applications.

Applications : For interior & exterior floor and wall areas.

Advantages : Exceeds type 2 requirement, high strength, extended open time for fixing of ceramic tile on floor and wall.

Suitable surfaces : Cement plaster, cement mortar bed, concrete, ceramic tile & stone (when mixed with home pride 93 mortar admixture) brick masonry and cement terrazzo.

Coverage : Approximately 55-60 sq. ft. per 20 Kg bag with a 1/4" X 1/4" (6mm X 6mm) square notched trowel for a bed thickness of 3mm.

Packaging : 20 Kg and 50 Kg.

Colour : Grey & white.

Certification : Approved 15477 : 2019 - Type 4, Meet ANSI A 118.4 - ET, EN : 12004 & ISO : 13007 - C2TES1



Home Pride 1031 Super Platinum / Stone Adhesive

A wonderful mixture of cement, silica and different polymers for installation of ceramic tiles, vitrified tiles, stones quarry tiles, pavers and bricks on facades. It is flexible to handle structural movement and can take on extreme weather conditions when mixed with water. It has a long open time with unsurpassed adhesion and workability.

Applications : Both for interior & exterior facades and under water application. Ensure the surface is free from any loose particle and strong enough to hold tile.

Advantages : It can be used on various surface like dried wall directly & under water applications, single component with ultimate bond strength. It comes in a single pack just mix with water.

Suitable surfaces : Concrete, cement plaster, cement tiles & stones, brick masonry, exterior grade plywood, gypsum wall board, ceramic tile and stone.

Coverage : Approximately 55-60 sq. ft. per 20 Kg bag with a 1/4" X 1/4" (6mm X 6mm) square notched trowel for a bed thickness of 3mm.

Packaging : 20Kg.

Colour : Grey & white.

Certification : Approved 15477 : 2019 - Type 4, Meet ANSI A 118.4 - ET, EN : 12004 & ISO : 13007 - C2TES2



HOME PRIDE
Complete Tile Fixing Solution

Home Pride AAC Block Jointing Mortar

Home Pride AAC block jointing mortar is a ready to mix blend of carefully prepared raw material, portland cement and other graded aggregates. Designed for use with water to produce high strength mortar which helps in providing mechanical bond as well as excellent adhesion between the blocks.

Advantages :

- Ready to use, Just add water.
- Provides excellent adhesion between two blocks.
- Reduces the time required for mounting the blocks.
- No curing required after blocks work is done.
- Shock and impact resistant.

Area of Applications : It is recommended for fixing all type of auto clave aerated concrete (AAC) block.

- Concrete blocks.
- Cement mortar blocks.
- Concrete hollow blocks and bricks.
- Cellular concrete blocks.

Coverage : Approximately 100 sq. ft. per 50 Kg bag when used at 2-3mm bed thickness. Coverage is based on smoothness, evenness of the surface, size of blocks used and the thickness of mortar used. A general guide line for coverage of mortar is given when used with 25% water added to powder.

Packaging : 30 Kg & 50 Kg.

Colour : Grey.

Certification : ISI : Type 2 Adhesive Meet ANSI A 118.1.



Home Pride Epoxy Grout Joint Filler

It is a specially formulated to give high strength - stain free chemical resistant joint filler for wall & floor tiles and also for stones. It consists of three parts resin, hardener & filler. It is recommended for industrial, commercial applications, food processing unit, commercial kitchens and packaging plants.

Applications : Industrial food processing plants, beverage plants, battery plants, environments requiring high temperature and chemical resistant.

Advantages : Heavy duty industrial grout. A superior chemical with heat resistant, water cleanable and fast curing. Highly resistant to bacteria attack.

Coverage :

$(\text{Tile Length} + \text{Tile Breadth}) \times \text{Tile Thickness} \times \text{Joint Width} \times \text{Specific Gravity} = \text{Kg/sq mtr}$
Specific Gravity = 1.75

$(\text{Tile Length} + \text{Joint Width})(\text{Tile Breadth} + \text{Joint Width})$

Packaging : 1 Kg, 5 Kg & 10Kg.

Factory proportioned consisting of three conveniently packed components - hardener (Part A), resin (Part B) and coloured filler powder (Part C).

Certification : Meets ANSI A 118.3

Available : 2 part & 3 part.



Home Pride Epoxy Glitter

It is a sparkling epoxy grout for wall & floor design to enhance the look of tile joints. It is suitable to use with ceramic, vitrified, glass mosaic tiles and natural stones. It is a combination of 3 components hardener, resin and filler. It has stain and chemical resistant properties.

Applications : Restaurant, hotels, kitchens, bathroom, lobbies, swimming pools and showrooms.

Packaging : 1 Kg, 5 Kg & 10 Kg. Available in 2 part and 3 part. It consists of three conveniently packed components - hardener (Part A), resin (Part B) and glitter coloured filler powder (Part C).

Colour : Available in 15 colours.

Coverage : $(\text{Tile Length} + \text{Tile Breadth}) \times \text{Tile Thickness} \times \text{Joint Width} \times \text{Specific Gravity} = \text{Kg/sq mtr}$
Specific Gravity = 1.75

$(\text{Tile Length} + \text{Joint Width})(\text{Tile Breadth} + \text{Joint Width})$

Certification : Meets ANSI A 118.3

Available : 2 part & 3 part.



HOME PRIDE
Complete Tile Fixing Solution

Home Pride Polycryl 1051

It is a polymer modified liquid readymade adhesive. No need to add anything design for installation of tiles on most dry wall boards, cement base surface free from dust & loose particle on tiles such as glass mosaic, ceramic tile, vitrified tile and natural stone. Can be easily fixed with polycryl 1051. It is a single component adhesive which is ready to use.

Applications : For commercial and residential installations of tile. Used where installation must resist shock & mild chemical for interior and exterior uses.

Advantages : Ready to use, single component, high strength and saves time. Can be use on various dry wall boards.

Suitable surfaces : Cement mortar bed, plywood, gypsum wall board, calcium silicate board, concrete bison panel board, concrete surface, cement plaster, AAC block, cement backer board, existing ceramic tile and other resistant tiles & stones.

Precaution :

- All cement base surface should have been cured as per standard practice and shall be dry for tilling.
- Consult cement backer board manufacturer for specific installation recommendation and to verify acceptability for exterior uses.
- Not for use on metal & plastic substrates.

Coverage : Approx 60 sq. ft. per 20 Kg unit with $\frac{1}{4}$ " x $\frac{1}{4}$ " (6mm x 6mm) square notched trowel.

Packaging : 5 Kg, 10 Kg & 20 Kg.

Colour : Off white.

Compliance : Meet ANSI A 118.4 EN D2TE.



HOME PRIDE
Complete Tile Fixing Solution

Home Pride All Rounder PU Adhesive

It is a two component when mixed together it gives a high strength adhesive for installation of ceramic, vitrified, metal, glass, agglomerates tiles and natural stone on any substrate. It is a highly elastic, thixotropic, suitable to lay water sensitive tile & stones on highly expandable, deformable, absorbent and non absorbent substrates.

Applications : For interior & exterior, wall & floor installation of all type of tiles whether ceramic, vitrified, metal tile, natural stone, metal substrates, concrete and dry wall.

Advantages : Suitable for all the substrates including metal. It is highly flexible, provides super strength & good for vertical surfaces.

Suitable substrates : Cement plaster without loose particle, concrete on all type of tiles & stones, wood, plywood, gypsum board, cement terazzo, engineered stones, marble, epoxy & resin surface.

Precaution : While using on backer board consult manufacturer for load bearing capacity and its uses.

Coverage : 15 to 17 sq. ft. per pack of 8 Kg with 1/4" X 1/4" (6mm x 6mm) square notched trowel for bed thickness of 3mm. A lot depends on variation of notched trowel size, type of tile, substrates, smoothness and evenness.

Packaging : 8 Kg consists of (Part A) 7.50 Kg., (Part B) 0.50 Kg.
4 Kg consists of (Part A) 3.75 Kg., (Part B) 0.25 Kg.

Compliance : Approved 15477 : 2019 - Type 5, Meet ANSI A 118.4 - ET,
EN : 12004 & ISO : 13007 - C2TES2



Home Pride Cementitious Grout (Unsanded)

Home Pride cementitious grout is a polymer modified grout which is used for filling tile joints of 1mm to 3mm in both interior and exterior area uses. It is recommended for ceramic, vitrified, non vitrified tiles and stones.

Applications : Residential, commercial, institution, hospital and school.

Advantages : Easy maintenance, non shrinking, non cracking for tile joints of 1-3mm, hard, durable and economic.

Mixing Ratio : Used approximately 400 ml of water or Home Pride grout admixture for 1 Kg of grout.

Coverage : Varies with tile size and grout width.

$(\text{Tile Length} + \text{Tile Breadth}) \times \text{Tile Thickness} \times \text{Joint Width} \times \text{Specific Gravity} = \text{Kg/sq. mtr}$
Specific Gravity = 1.75

$(\text{Tile Length} + \text{Joint Width}) (\text{Tile Breadth} + \text{Joint Width})$

Packaging : 1 Kg, 10 Kg & 20 Kg.

Colour : Available in all colour as per shade card.

Certification : Exceed ANSI A 118.6.



Home Pride Cementitious Grout (Sanded)

It is a factory prepared mixture of portland cement, polymer and aggregates for filling tile joints of 3 to 12mm for non absorbent tiles. For interior and exterior areas. It is a durable, hard, colour fast and economical.

Applications : Residential, commercial and external facades.

Advantages : For tile joints of 3-12mm, uniform colour, hard, durable and economical.

Mixing Ratio : Use approximately 400 ml of water or Home Pride grout admix for 1 Kg of grout.

Coverage : Varies with tiles size and grout width.

$(\text{Tile Length} + \text{Tile Breadth}) \times \text{Tile Thickness} \times \text{Joint Width} \times \text{Specific Gravity} = \text{Kg/sq. mtr}$
Specific Gravity = 1.75 $(\text{Tile Length} + \text{Joint Width}) (\text{Tile Breadth} + \text{Joint Width})$

Packaging : 1 Kg, 10 Kg & 20 Kg.

Colour : Available in all colour as per shade card.

Certification : Exceed ANSI A 118.6.



Home Pride Water Repellent Grout

Home Pride water repellent grout is a new breed of grout which repels water, stain and even breeding of fungus. It gives extra strength so that tile does not debond. It has a property that allows joints to resist water upto 1-2 hours.

Advantages : Easy to install and water repellent properties.

Applications : Washrooms, swimming pools, spa & sauna, hospitals, laboratories, operations theaters, schools and educational institutes.

Coverage : Varies with tiles size.

$(\text{Tile Length} + \text{Tile Breadth}) \times \text{Tile Thickness} \times \text{Joint Width} \times \text{Specific Gravity} = \text{Kg/sq. mtr}$
 $\text{Specific Gravity} = 1.75 \frac{(\text{Tile Length} + \text{Joint Width}) (\text{Tile Breadth} + \text{Joint Width})}{\text{Tile Thickness}}$

Packaging : 1 Kg & 20 Kg.

Colour : Available in all colours as per shade card.



Home Pride Polymer Modified Grout

It is a polymer modified grout when mixed with other chemical & aggregates to give high strength and non porous grout which exceed strength of normal grout to make water repellent, flexible & non porous.

Applications : Easy to install, flexible and non porous.

Advantages : Fast colour, shock resistant, reduce water absorption and easy to clean.

Packaging : 1 Kg.

Coverage : Varies according to application.

Available Shades : White, ivory, brown, black and other shades on order.



Na Tile
Toote.
Na Dil.



HOME PRIDE
Complete Tile Fixing Solution

Home Pride Wall Putty

Home Pride wall putty is a single pack unique formula based on polymer, cement, chemical and waterproofing properties. For use on cement plaster on both interior and exterior walls areas. Due to its unique quality it enhances the life of paints.

Advantages : Easy to apply, water resistant, durable and does not allow paint to flake.

Coverage : It covers approx. 16 to 20 sq. ft. per Kg for 2 coats maintaining a maximum thickness of 1.5mm on smooth plaster surface.

Packaging : 1 Kg, 10 Kg, 20 Kg & 40 Kg.



Home Pride Course Wall Putty

Home Pride course wall putty is a world class product based on polymer, cement, chemical and fine graded mineral. It is used for making uneven surface even and smooth. It can be used in interior as well as exterior areas.

Advantages : Easy to apply, water resistant, durable, does not allow paint to flake, good compressive strength, tensile strength and anti-fungal.

Coverage : It covers approx 10 to 11 sq. ft. per Kg 2mm thickness coverage depending on surfaces.

Packaging : 20 Kg & 40 Kg.



Home Pride Wall Plaster

Home Pride wall plaster is a unique single product based on polymer, graded aggregates & chemicals to make a perfect plaster can be used in interior and exterior areas. It is water resistant, fine & close pores of wall. It provides smooth and dry wall plaster.

Advantages : Less water curing, saves time, easy to use, cost saving and environmental friendly.

Applications : Interior & exterior areas.

Suitable surfaces : Block, brick, sand plaster and old scrap surfaces.

Colour : Grey and white.

Coverage : Approx. 10-14 sq. ft. Kg per 30 Kg bag at bed thickness of 10-12mm.

Packaging : 30 Kg & 50 Kg.



Home Pride Thin Bed Plaster

It is a ready to mix plaster based on polymer, graded aggregates and other chemicals which makes a waterproofing plaster when mixed with water. A layer of 3-4mm is sufficient enough for plastering the surface.

Advantages : Need no curing, saves time, easy to use and cost saving.

Applications : Interior & exterior areas.

Suitable surfaces : AAC block, concrete, sand plaster and old scrap surfaces.

Colour : Grey and white.

Coverage : 100 sq. ft. approx 30 Kg per bag at bed thickness of 3mm.

Packaging : 40 Kg.



Home Pride Gypsum Plaster Elite 30 Silver

Home Pride gypsum plaster is a polymer hemihydrates based product which gives excellent bonding on surfaces, smooth finish, good work ability and good setting. It can be applied internally on brick, block and cement plaster.

Applications : On all internal surface, brick, block and cement plaster.

Coverage : Approx 65-68 m² / 1000 Kg at 13mm bed thickness.

Packaging : 25 Kg & 50 Kg.

Home Pride Gypsum Plaster Elite 90 Gold

Home Pride gold gypsum plaster is based on gypsum, graded aggregate, chemical and polymer. It is a suitable plaster for application on brick, block, cement sand plaster. It gives smooth & aesthetic finish.

Applications : All internal surface, brick, block, sand plaster and RCC surface.

Coverage : Approx 72-75 m² / 1000 Kg at 13mm bed thickness.

Advantages : Excellent bonding, strong & durable, no water curing, no shrinkage and crack.

Home Pride One Coat Plaster

Home Pride one coat plaster is a gypsum based plaster that is fast becoming the standard of high quality smooth internal finish. It is a single application process that replaces both cement plaster and POP with direct application.

Applications : All internal surface, brick, block, sand plaster and RCC surface.

Coverage : Approx 65-70 m² / 1000 kg at 13mm bed thickness.

Advantages : Excellent bonding, strong & durable, no water curing, no shrinkage and crack.



Home Pride Tile Bonder

Home Pride tile bonder is a single component when mixed with cement it gives ultimate strength for fixing tiles on wall & floor. Recommended for interior & exterior area uses.

Applications : For installation of all type of tiles on wall & floor.

Advantages : It gives cement flexibility & water curing properties.

Suitable surfaces : It can be applied on cement plaster, stones marble and chip flooring.

Coverage : It can vary according to surfaces.

Methods for use :

- 50 Kg Cement : 300 Gm Home Pride tile bonder.
- 25 Kg Cement : 25 Kg sand : 300 Gm. Home Pride tile bonder.

Packaging : 300 Gm. & 1 Kg.

Colour : White.



Home Pride Thick Bed Mortar

Home Pride thick bed mortar is a special polymer based factory blend of natural mineral, cement and fillers. It is designed to be used with Home Pride latex admix 3001 or water to produce high strength thick bed adhesive upto 50mm for installation of all type of tiles & stones. It can be used in exterior and interior areas on cement plaster or on screed for wall & floor.

Applications : Interior and exterior areas.

Advantages : High strength, shock impact resistance and can be applied from 12-15mm in one application.

Suitable surfaces : Concrete and cement mortar bed.

Packaging : 30 Kg & 50 Kg.

Colour : Grey and white.

Certification : ISI : Type 2 Adhesive Meet ANSI : A 118.1.





Home Pride 3333 Polymer

Home Pride 3333 is a concentrate polymer which is diluted with water on site and can be mixed with cement, sand, adhesive, any cement plaster, coating mortar beds and screed. It improves strength, can be used in interior & exterior as well as under plaster and screed. It can also be used in underwater applications.

Advantages : Increases comprehensive strength, flexibility, durability & water resistant.

Packaging : 5 Ltr. & 20 Ltr.

Feature : It can also be used as primer for dry wall board for tiling and screed.



Home Pride 93 Crete Admixture

Home Pride crete admixture 93 is a polymer modified to be use with powder adhesive. It increase comprehensive strength, flexibility compared to conventional adhesive and portland cement. It increase strength, extremely widen to install vitrified tile, quarry tile, paver and other ceramic tiles in areas such as external façade, industrial plant, swimming pool and heavy traffic area.

Advantages : Highly flexible, shock & impact resistance and high comprehensive strength. Exceeds indian type 2 and ANSI standard.

Coverage : Approximately 50 to 55 sq. ft. per 5 Ltr. Mix with 20 Kg bag Home Pride 1001, crete filler powder, adhesive using 1/4" X 1/4" (6mm X 6mm) sq. ft. notched trowel for bed thickness of 3mm.

Packaging : 5 Ltr. & 20 Ltr.



HOME PRIDE
Complete Tile Fixing Solution

Home Pride Grout Admixture

Home Pride grout admixture is a polymer modified with other chemical to produce liquid admixture which when mixed with sanded and unsanded grout, it gives high strength & non porous grouts. It exceeds strength of normal grout, makes grout water repellent, flexible and non porous.

Applications : It improves the performance of cement grout.

Advantages : Colour fast, flexible, comprehensive strength, shock & chemical resistant, reduced water absorption and easy to clean.

Packaging : 100 ML, 200 ML, 400 ML, 5 Ltr. & 20 Ltr.

Coverage : Varies by applications.



Home Pride Shield Concrete Admixture

It is a acrylic modified polymer with some chemical which has vast properties to make concrete strong enough so that there is no room left for any short coming of plain cement or concrete particularly with its poor adhesion property, low impact strength and low flexural strength. It enhances strength of cement slurry, mortar and concrete making them excellent choice for use in new construction as well as renovation works.

Applications : Designed for all type of concrete, mortar and slurry.

Advantages : Superior bond to cement & single component for many uses.

Suitable surfaces : Concrete, concrete masonry, cement mortar bed and cement plaster.

Packaging : 20 Ltr, 50 Ltr. & 200 Ltr.



MARBLE & STONE CARE PRODUCTS

Sealer

Home Pride sealer is a solvent, medium viscosity epoxy based liquid. It is especially modified to treat granites such as alaska white and other light colored granites. It is applied on marble & stones to close its pores & to prevent any substance like tea, coffee to penetrate into the surface preventing stains.

Applications :

Designed specifically for interior and exterior area applications to protect natural stone installations against water based stains.

Advantages :

Mild penetrating sealer that protect against stains.
Non-flammable solution which cures to an invisible water repellant coating.
Weather resistant - protects stone, brick and tile.
Easy to apply – no special tools required, low viscosity.

Packaging : 1 Ltr, 5 Ltr, 10 Ltr. & 20 Ltr.

Coverage : 65-300 sq. ft. per litre depending on the porosity of stone.



MARBLE & STONE CARE PRODUCTS

Densifier

Home Pride densifier is designed to enhance colour, shade & gloss of granite & other less porous stones. On application of the product it imparts very high gloss to the substrate. It is water base binder to penetrate into the pores of marble & stone to make it solid.

Applications :

Apply liquid via mop or sponge on areas to be treated.
Spread using soft cloth or sponge evenly on the area.
Reapply liquid until saturation is reached.
Let area dry for 24 hours before continuing the polish and further treatment.
Multiple applications may be required for softer stones.

Advantages :

Increase in density.
Increase in hardness.
Increase in abrasion resistant.
Increase in salt resistant.
Increase in water and stain repellancy.
Increase in gloss.
Retains gloss for longer time.

Packaging : 1 Ltr., 5 Ltr., 10 Ltr. & 20 Ltr.

Coverage : 65-300 sq. ft. per litre depending on the porosity of stone.



MARBLE & STONE CARE PRODUCTS

Epoxy Gel

Home Pride epoxy gel is a fast drying, non-yellowing filling for white coloured stones such as thassos, carrara, vietnam white, australian white etc. The product has optimum viscosity for deeper penetration. It is a solvent free system and ratio of resin to hardener is 100:33 (by weight). It is used for filling stone joints. It has a non-yellowing property and can be filled in vertical surfaces.

Applications :

Stone working industry for weather resistant bonding and gluing of natural stone like marble & granite.

Home Pride epoxy gel can be used to glue plastics like (hard PVC, polyester, polystyrene, ABS, polycarbonates).

Granite, marbles and other natural stones.

Building material (terrazzo, concrete).

Paper, wood, glass and many other materials.

Advantages :

Easy colouring with colouring paste.

Very low tendency to yellow.

Low shrinkage during the hardening process therefore low tension in the bonding layer.

Good dimensional stability of the bonding layer.

Good adhesion on slightly humid stones.

Packaging : 1 Ltr, 5 Ltr, 10 Ltr. & 20 Ltr.

Coverage : 150-250 sq. ft. per Kg depending on thickness & length of joints.



HOME PRIDE
Complete Tile Fixing Solution

MARBLE & STONE CARE PRODUCTS

Crackfill

Home Pride crackfill is a very fluid, 2-component, epoxy resin system with a modified amine hardener which is used for firmly closing cracks and pores. It is epoxy based & used to repair cracks in marble and granite.

Applications :

It is mainly used in the stone processing industry for strengthening porous, fissured natural stone slabs, concrete, concrete ashlar and improving their surface qualities. In combination with spun glass fabrics it is also used for strengthening brittle natural stone slabs. The hardened product shows a minimal tendency to yellow if exposed to ultraviolet light or to warmth.

Advantages :

- Hardens relatively quickly.
- Has highly penetrative properties on account of its low viscosity.
- Clear & transparent, best suitable for light natural stone.
- Free of solvents.
- Weather resistant.
- Excellent grinding and polishing properties.
- Increases the firmness and improves the quality of natural stone surfaces.
- Increases the yield and productivity.

Packaging : 1 Ltr, 5 Ltr, 10Ltr. & 20 Ltr.

Coverage : 150-250 sq. ft. per Kg depending on thickness & length of cracks.



HOME PRIDE
Complete Tile Fixing Solution

MARBLE & STONE CARE PRODUCTS

Mastic

Home Pride mastic is a polyester putty glue. It is widely used for filling small cracks and joints. It has quicker grip. Mastic is a polyester base glue made up from the mix of resin and nano filler. It is specially used for joint filling of all types of marble, granite, natural as well as artificial stone. It is also used for consolidation and grouting of stone. Mixed system hardens perfectly at a room temp of 20-25°C.

Part A : Resin

Part B : Hardener

Applications :

Residual moisture content of the stone substrate should not exceed 5%.

No rising moisture & potential osmosis problems.

Joint filling of natural stone.

Hair line filling and repairing of stone defect.

Advantages :

Easily pigmented.

High strength after curing.

Durable.

Excellent adhesion.

Very good glossy property.

Packaging : 1 Kg, 5 Kg, 10 Kg & 20 Kg.

Coverage : 150-250 sq. ft. per Kg depending on usage.



MARBLE & STONE CARE PRODUCTS

Powder Polish

Home Pride powder polish is a high performance product containing compact calcium useful for marble, granite and limestone. The product removes all dull itches, watermark and surface scratches while renewing the surface with original gloss and unifying the surface aspect. Application hardens the natural surface of the stone, therefore increasing durability against general foot traffic. It gives mirror like shiny look on italian & artificial wonder marble. Widely used in 5 star hotel.

Applications :

Restoration powder for daily maintenance of marble floor to maintain gloss.
Mirror-like finishing achieved.
Contain no direct acid so that's why it's not harmful to calcareous stone.
Proper use for maintaining the floor. Can also densify the floor.
Treated floor have a good scratch resistant.

Advantages :

Nice luster finish & long lasting.
Excellent glossy effect with anti slip property.
Moderate hydrophobic property.
Wash resistant.
Excellent coverage.
High temperature resistant.
Moss & fungus resistant.

Packaging : 1 Kg, 5 Kg, 10 Kg & 20 Kg.

Coverage : 150-250 sq. ft. per Kg depending on the usage.



HOME PRIDE
Complete Tile Fixing Solution

OUR SPECIAL PRODUCT

Chrome Polish Guard

Home Pride chrome polish guard is a effective guard against stubborn water stain marks and hard scaling which develops due to hardness of water. Used on C.P fittings, tap & accessories.

Applications :

Bath fittings, bath accessories, kitchen sinks, washbasins and chrome plated article.

Advantages :

Effective for CP fittings & sanitary wares.

Removes hard scaling which develops due to hardness of water.

Removes stubborn water stain marks & lime scale with ease.

How to use :

1. Clean the tap with Home Pride miracle tap cleaner and flush with ample water.
2. After cleaning, rub it with a clean & dry cloth.
3. Before spraying chrome polish guard cover the surrounding areas of tap and accessories which are not to be coated with paper or masking tape.
4. Spray chrome polish guard which has a slight yellowish tone on tap and bathroom fixtures so that no area is left uncoated.
5. Leave it for the whole night (8-10) hours.
6. After this process tap & accessories are ready to use.

Packaging : 100 ML.

Coverage : According to usage.



Home Pride Cutfast Tile Cleaner

Home Pride cutfast tile cleaner is a powerful heavy duty cleaner for ceramic wall & floor tiles. It removes tough stains and other type of stains. Dilute it for daily maintenance and easy to use.

Applications : Interior & exterior areas, kitchens, bathroom and counter tops.

Advantages :

- Fast acting
- Non-corrosive
- Easy to use
- Economical

Packaging : 1 Ltr., 5 Ltr., 10 Ltr. & 20 Ltr.

Coverage : 15-50 sq. ft. per litre depending on porosity of the surface.

Precaution : Acid cleaner may leave mark on surface and also may damage surfaces.



Home Pride Cutfast C.P. Cleaner

It is an effective cleaner designed for CP fittings & sanitary ware. This unique product removes stubborn water stain and hard scaling which develops due to hard water. Must clean with ample water after use of cleaner.

Applications :

All types of C.P fittings and sanitary ware.

Advantages :

- Fast acting
- Easy to use
- Cut hard water stains

Packaging : 250 Ml., 500 Ml., 1 Ltr. & 5 Ltr.

Precaution : Cleaner may leave a mark on the surface and also may damage. So after using tap cleaner immediately wash with ample water.



Na Tile
Toote...
Na Dii.



Home Pride Cutfast Epoxy Remover

It is a chemicals based cleaner which can be used to remove grout epoxy & adhesive from tiles, hard water deposits and other hard stains from tile & stone surface. It can be used in interior as well as exterior applications.

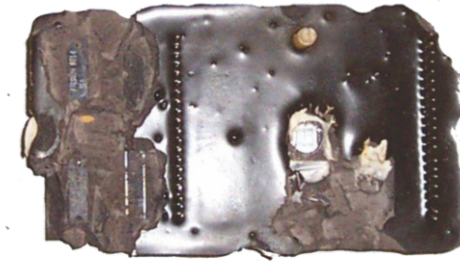
Applications : On epoxy surface.

Advantages : Fast acting, non-corrosive, easy to use and economical.

Packaging : 500 Ml. & 1 Ltr.

Coverage : 250-2500 sq. litre depending on porosity of the surface.

Precaution : Chemical cleaner may leave a mark on the surface and also may damage surfaces. So apply small quantity of cleaners first to check the surfaces.



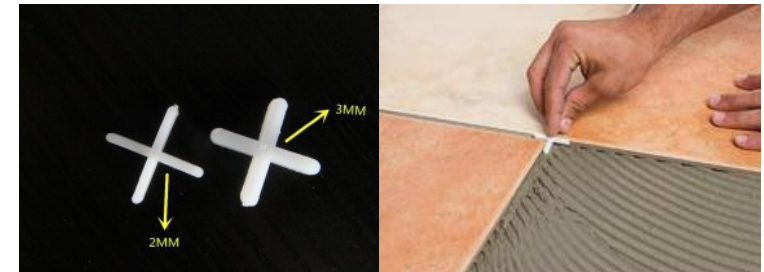
Home Pride Spacer

Home pride spacers is made up of heavy duty plastic which is available in various size and thickness e.g 2mm, 3mm, 4mm, 5mm, 6mm, 8mm and 10mm.

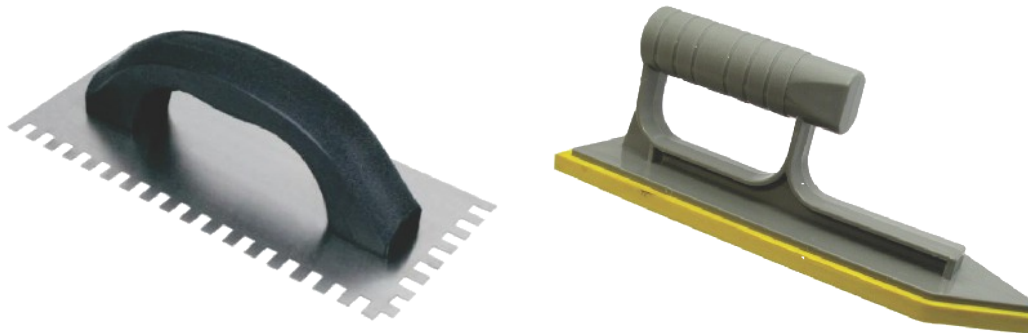
Applications : Ceramic tiles, vitrified tiles & other type of tiles.

Advantages : High accuracy and easy to use.

Packaging : 100 & 1000 pieces.



Home Pride Trowel For Adhesive & Grout



HOME PRIDE
Complete Tile Fixing Solution

369

Home Pride 369 Epoxy Adhesive

It is a mixture of special chemical and hardener for installation of all type of tiles like quarry tile, bricks and paver on internal floor of commercial plants kitchens, beverage plants and food processing plants. Ideal for moisture sensitive marble. It can be used on metals.

Applications : Commercial kitchens restaurant, food processing area also recommended for rubber flooring & wood block floors. Also for installation for green marble, white marble, agglomerated marbles that have tendency to stain, darken, warp when installed with water base installation material.

Advantages : Ideal for fixing tiles & can be used over metals, fast setting and superior bonds strength.

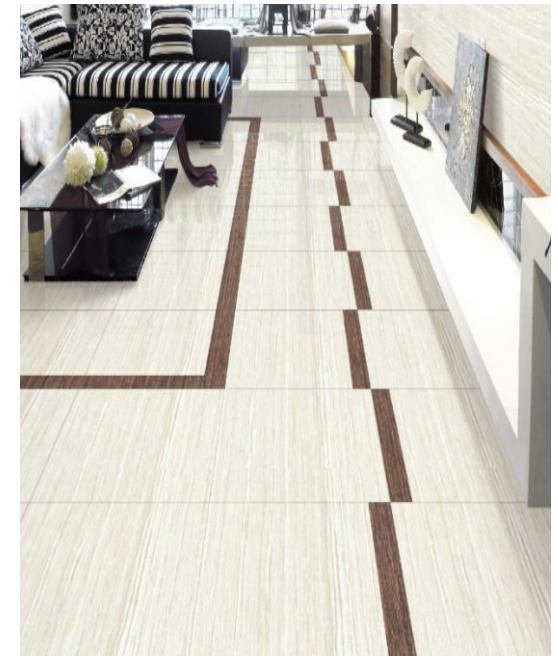
Suitable surfaces : Resin back tiles, mosaic stones and agglomerates.

Coverage : Varies in accordance with the size type of tile installed.

Packaging : 5 Kg.

Unit : It consist of 3 components – hardener, resin and filler powder.

Colour : Grey and white.



371

Home Pride 371 Epoxy Anchor Adhesive

Home Pride is a two component high strength on spot fixing epoxy adhesive for fixing marble stones slabs on wall and other heavy tiles . Ideal for external facades.

Advantages : Permanent bond, durable, shock and vibration resistance no clamps / no mechanical anchor needed.

Packaging : Available in 5 Kg. and 10 Kg. pail (normal & fast setting).

Colour : Off white, can be coloured with pigment.



Na Tile
Toote.
Na Dil.



HOME PRIDE
Complete Tile Fixing Solution

Home Pride Two Component Water Proofing (Shield Crete)

Home Pride two component water proofing is a high performance acrylic polymer modified cementitious membrane coating for under tile waterproofing. It helps in safeguard against water penetration as it provides high resistance against long term weathering and is high performer in every climatic condition.

Applications : It can be applied on bricks, blocks, fiber, cement board, glazed surface, cast concrete, plaster board and moisture resistant grade plaster board. For best results apply it after priming the surface and allow two component water proofing to dry completely for 3 days before tiling the surface.

Advantages : It protects gypsum, cementitious boards and concrete against water penetration. Its elastomeric quality makes it flexible enough to fill up hairline cracks. It is economical, non-toxic, durable and can easily be applied both internally as well as externally.

Suitable surfaces : Gypsum, cementitious boards, glazed surface, cast concrete, plaster board and moisture resistant grade plaster board.

Coverage : According to usage.

Packaging : 1 Kg. Component (A) Polymers & 2/4 Kg. Component (B) Aggregates.

Colour : Grey.



Home Pride Hydro Block

It is a special polymer, rubber based waterproofing /crack isolation membrane. It is a unique single component flexible rubber based which has wonderful water blocking properties and it is formulated for waterproofing application.

Advantages : Single component membrane upto 3mm bond directly to copper steel & PVC plumbing fixture. Fast Drying (allow for flood test in 24 hours).

Applications : Interior & exterior, industrial, commercial, residential, bathrooms, swimming pools, fountains water bodies, shower pans, tub, spa, hot tubs, kitchen, food processing areas, terraces and balconies over unoccupied space & facades.

Suitable surfaces : Concrete, brick masonry, cement plaster, gypsum plaster, gypsum wall board, exterior glue plywood and ceramic tiles & stones.

Coverage : 225-250 sq. ft. per 20 Ltr.

Packaging : 20 Ltr.



No Tile
Toote.
Na Dil.



HOME PRIDE
Complete Tile Fixing Solution

HOME IS EVERYBODY'S PRIDE SO MAKE SURE YOU USE HOME PRIDE

SOME OF OUR PRESTIGIOUS CLIENTS

GOVT. PROJECT

DMRC
NBCC
IIT CAMPUS
GAIL INDIA LTD.
FEROJ SHAH KOTLA GROUND
BHAJ VEER SINGH SADAN



HOTELS

TAJ PALACE HOTEL
THE LALIT
RADISSON
RAMADA
LE MERIDIEN
HOLIDAY INN



TEMPLES • HOSPITALS SCHOOLS & COLLEGES

AIIMS DELHI
GURU TEG BAHADUR HOSPITAL
PREM MANDIR VRINDAVAN
KALKAJI MANDIR DELHI
RPS INTERNATIONAL SCHOOL
DELHI PUBLIC SCHOOL DELHI



BUILDERS & DEVELOPERS

GODREJ ICONS
GULSHAN HOMES
SUPERTech HILL TOWN SOHNA GURUGRAM
LOTUS GREEN NOIDA
VEGAS MALL DWARKA DELHI
GODREJ NATURE PLUS SOHNA
GDCL DELHI
AURIC HOMES FARIDABAD
THE AMARYLLIES NEW DELHI
AIPL PEACEFUL HOMES GURUGRAM
CCC ZIRAKPUR CHANDIGARH
HIGHLAND PARK CHANDIGARH
ADVANCE INDIA PVT. LTD.
GRAPHIC ERA UNIVERSITY DEHRADUN
K.W. SRISTI (K.WORLD)
BHARAT CITY
HIMALAYA PRIDE
KRISHNA VALLEY
AKSHAY PATRA



HOME IS EVERYBODY'S PRIDE SO MAKE SURE YOU USE HOME PRIDE

HOME IS EVERYBODY'S PRIDE SO MAKE SURE YOU USE HOME PRIDE



HOME PRIDE

Complete Tile Fixing Solution

Na Tile
Toote.
Na Dil.



Home Pride Adhesive Pvt. Ltd.

Website : www.homepride.in | www.homeprideadhesive.com

E-mail : homeprideadhesive@gmail.com

Toll Free : 1800 111 818

BLOCK ADHESIVE | | GYPSUM PLASTER | HOME PRIDE WALLPUTTY

